



Mechanical or Electrical CAD/CAE Engineering Tools management

Manage CAD/CAE Software License information- Vendors, Contacts, Tools, License Keys, License Servers, Daemons, Expiration dates, License Agreements and costs. Know current checkout status, understand license utilization for any time period and who are your "Power-Users". Monitor for long-checkouts and usage trends!

Can you do a better job of managing these expensive assets? YES!

License Asset Manager with Usage Monitoring (LAMUM)

An Enterprise Class application for consolidating, sharing, and protecting mechanical and electrical engineering software License information across the business-unit, or enterprise, and monitoring usage of expensive networked licenses.

❖ Key Benefits-

- ✓ Clarity, control, and confidence for managing engineering software assets
- ✓ Save time and effort looking for critical License, Tool or Vendor information
- ✓ Purchase history with documented 'promises' and 'give-a-ways' by Vendor
- ✓ Proactively manage Subscription and Maintenance renewals
- ✓ Reduce Total License costs
- ✓ Reduce Maintenance costs
- ✓ Reduce time managing licenses
- ✓ Licensing Compliance

❖ Key Features-

- ✓ Fast and easy to install and use
- ✓ Track usage on FlexLM and others
- ✓ Your company logo on every page
- ✓ Sort and Filter on any Column
- ✓ Graphs are .jpg images
- ✓ Tables exportable to Excel
- ✓ On-demand "Favorite" reports
- ✓ Feature Name Aliasing
- ✓ Many different "Alerts"
- ✓ Active Directory link
- ✓ FlexLM license file parser utility
- ✓ Vendor information preloaded
- ✓ Current Checkout Status
- ✓ Numerous Historical Usage reports
- ✓ Combined-Feature report
- ✓ Multiple-Feature report
- ✓ Batch Reports (weekly, monthly,...)

- 1. Consolidate Vendor, Tool Inventory, License key, cost, License Server, and charge center info**
- 2. Preserve, protect and share license info**
- 3. Track all WAN, LAN, and Node-locked Licenses**
- 4. Track Subscriptions, time-based Licenses, Maintenance Contracts, costs, and Renewal dates**
- 5. Track latest and approved "Tool Versions"**
- 6. Reports by License Types, Discipline, Locations, Server, Expiration date range, and many more**
- 7. Support for MathWorks, PTC, AutoDesk, Cadence, Mentor, Synopsys, Ansys, Solidworks, Altair, Altium, and many others**
- 8. Import Feature, Qty, Expiration, and Version #, Server, Daemon and Port information directly from the FLEX License file**
- 9. Expiration, Long Checkout, Capacity Alerts**
- 10. Utilization statistics with Usage Reporting**
- 11. Feature Name Aliasing**
- 12. User and Group Usage reports**
- 13. Active Directory link**
- 14. Superior Technical Support**
- 15. Great value!**

Description- License Asset Manager with Usage Monitoring (LAMUM) is a browser-based, web-enabled, database centric, enterprise class application for managing all Vendor, Tool and License information. Companies as small as 25 engineers, to as large as 2,500 engineers, with multi-site engineering will get valuable results. LAMUM pricing is scaled by # of unique daily users. **LAMUM is for Managers who like clarity, control, and confidence.** **Clarity** in the data they are viewing, **Control** of Vendor relationships, and license inventory, and **Confidence** in managing those relationships and Licenses. All License types, Perpetual or Subscription (time-based); LAN, WAN, Node-locked; FlexLM, RLM, RMS, LUM, DSLS,..... can be easily cataloged and managed within LAMUM. The database is relational. The web services is Apache. Everything needed is contained in the LAMUM package. It is truly "turn-key". It takes less than one hour to download, install, and be collecting usage data with LAMUM

License Inventory View

License Asset Manager

173.166.117.29:8181/lam/lamview...?selected=3

Release Version : 5.8.0 (build 2011.04.28)

License Asset Manager

Alerts Req PO Licenses Vendors Tools Servers Reports Settings

Add New License Import Configure View Filter

Total Quantity: 651 Total Amount: \$2,679,978.70

Vendor	Tool	PO	Quantity	Site	Restrict	Purchase Type	Expiry Date	Amount	Responsible Eng
Abacus	Abacus/Standard	2141441	2	Boston	WAN-ETZ	Perpetual	Jul-17-2009	\$47,000.35	Anupam Bakshi
Abacus	Abacus/CAE	2141441	2	LAN- San Diego	Subscription		Aug-14-2011	\$45,500.00	Les Payne
Abacus	Abacus/CAE	12345	2	LAN- San Diego	Subscription		Aug-14-2011	\$45,500.00	Anupam Bakshi
Abacus	Abacus/CAE	2141441	1	Boston	NODE	Subscription	Aug-04-2011	\$20,000.00	Les Payne
Adobe	Acrobat 2	415500021	100	NODE	Perpetual		Apr-01-2999	\$22,500.00	Dustin Fleury
Adobe	Acrobat 2	415500021	1	NODE	Perpetual		Apr-01-2999	\$2,500.00	Dustin Fleury
Adobe	Acrobat 2	415500021	20				Feb-16-2012	\$12,000.00	Dustin Fleury
Adobe	Illustrator	CC_043011	5	NODE	Perpetual		Apr-26-2999	\$3,500.00	
Adobe	Illustrator		1	NODE	Perpetual		Apr-26-2999	\$3,500.00	Anupam Bakshi
Altair	HyperWorks	1430 156608	63	LAN- Wichita	Subscription		Jan-20-2012	\$28,350.00	Les Payne
Altair	HyperWorks		20	LAN- Wichita	Subscription		Jan-20-2012	\$15,000.00	Les Payne
Altair	HyperWorks		63	LAN- Wichita	Subscription		Jan-20-2012	\$28,350.00	Les Payne
Altair	HyperCrash	1430 156608	5		Subscription		Nov-08-2011	\$12,000.00	Dexin Wang
Cadence	Allegro Design Editor	134520	4	Santa Clara	LAN- San Diego	Subscription	Jul-07-2012	\$42,250.00	Dexin Wang
Cadence	Incisive Enterprise Family	1482330	10	Santa Clara	WAN-US	Subscription	Jan-09-2013	\$32,400.00	
Cadence	Chameleon	1482330	1	Santa Clara	WAN-US	Perpetual_W/_Maintenance	Mar-10-2011	\$48,000.00	Martin Gordin
Cadence	NC-Sim	12445	25	Santa Clara	LAN- San Diego	Subscription	Jan-31-2011	\$34,000.00	
Cadence	Xtreme	12445	10	Santa Clara	LAN- San Diego	Subscription	Mar-12-2011	\$132,313.00	
Cadence	Virtuoso NeoCell	31773	2	Santa Clara	LAN- San Diego	Subscription	Apr-03-2012	\$35,000.00	
Cadence	Allegro PCB Router	134520	2	Santa Clara	WAN-US	Subscription	Jul-07-2011	\$32,500.00	Guy Haas

Support for all popular Browsers

Tabs to quickly view relevant information

Sort or Filter on any column

Extensive use of "hot links"

Your LOGO

Create custom Views

License Usage Summary View

Licenses being monitored

Monitor Update

Tool Name up down	Tag Name up down	Daemon Name	Type	Status	Info	History	User Details	Group Details	Heatmap	Concurrency	Denials
AtRisk	AtRisk	palisade	FlexLM	OK	Realtime	Graphs	Table	Table	Graph	Graph	Table
AutoCAD	AutoCAD	adskflex	FlexLM	OK	Realtime	Graphs	Table	Table	Graph	Graph	Table
DecisionSpace	DecisionSpace	Igcx	FlexLM	OK	Realtime	Graphs	Table	Table	Graph	Graph	Table
Drillbench	Drillbench	scplmd	FlexLM	OK	Realtime	Graphs	Table	Table	Graph	Graph	Table
DrillNET	DrillNET	petris	FlexLM	OK	Realtime	Graphs	Table	Table	Graph	Graph	Table
Eclipse	Eclipse	slbcls	FlexLM	OK	Realtime	Graphs	Table	Table	Graph	Graph	Table
Ecrin	Ecrin	KAPPA	FlexLM	OK	Realtime	Graphs	Table	Table	Graph	Graph	Table
Flowmaster	Flowmaster	flowlmd	FlexLM	OK	Realtime	Graphs	Table	Table	Graph	Graph	Table
Geographics	Geographics	licsrv	FlexLM	OK	Realtime	Graphs	Table	Table	Graph	Graph	Table
Geolog	Geolog	prdm_geo	FlexLM	OK	Realtime	Graphs	Table	Table	Graph	Graph	Table
Geox	Geox	scplmd	FlexLM	OK	Realtime	Graphs	Table	Table	Graph	Graph	Table
Olga	Geox	scplmd	FlexLM	OK	Realtime	Graphs	Table	Table	Graph	Graph	Table
EDM	LandmarkEDM	licsrv	FlexLM	OK	Realtime	Graphs	Table	Table	Graph	Graph	Table
LSF	LSF	lsf_id	FlexLM	OK	Realtime	Graphs	Table	Table	Graph	Graph	Table
NETool	NETool	licsrv	FlexLM	OK	Realtime	Graphs	Table	Table	Graph	Graph	Table
OpenSpirit	OpenSpirit	osp	FlexLM	OK	Realtime	Graphs	Table	Table	Graph	Graph	Table
Petrel	Petrel-Techlog-OpenSpirit	slbcls	FlexLM	OK	Realtime	Graphs	Table	Table	Graph	Graph	Table
PVTSim	PVTSim	callmd	FlexLM	OK	Realtime	Graphs	Table	Table	Graph	Graph	Table
Questor	Questor	QUESTOR	FlexLM	OK	Realtime	Graphs	Table	Table	Graph	Graph	Table
RGS	RGS	HPQ	FlexLM	OK	Realtime	Graphs	Table	Table	Graph	Graph	Table
RMS	RMS	geomaticLM	FlexLM	OK	Realtime	Graphs	Table	Table	Graph	Graph	Table
RokDoc	RokDoc	IKON	FlexLM	OK	Realtime	Graphs	Table	Table	Graph	Graph	Table
Petrel	Schlumberger_Petrel	slbcls	FlexLM	OK	Realtime	Graphs	Table	Table	Graph	Graph	Table
CGM Viewer	SDI-CGM	SDI	FlexLM	OK	Realtime	Graphs	Table	Table	Graph	Graph	Table

Tools being monitored

License type and TAG (friendly name for port@host)

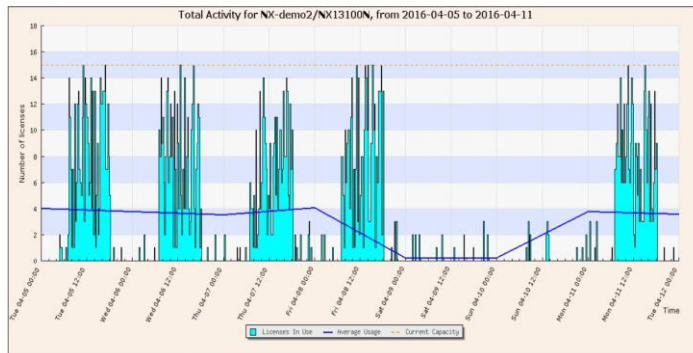
Graphs and Table Reports "by Tool"

Sample Usage reports

Typical 7-day Usage graph

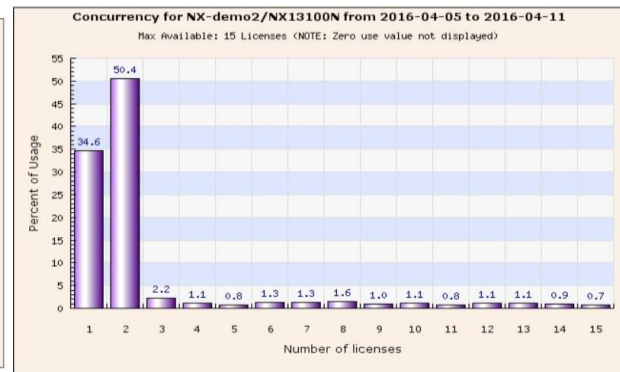
7 day table

Full Graph



Concurrent-use graph (24x7)

7 Day Graph



User Details Table (AD link to User info)

User Details Report for Feature: NX13100N

Back to [Home](#)

Select Time Period

☐ Today's Table ☒ Week Table ☐ Month Table ☐ 90 Day Table ☐ Year Table
☐ Custom: From: [YYYY-MM-DD] To: [YYYY-MM-DD]
Display Report [v] Submit

First Prev 1 - 20 / 20 (20) Next Last [20 v]

Usage History Starting 2016-04-04 through 2016-04-11			
User Name	Total Usage	Total Check Outs	Last Check In
afoyte	114:42:31	114	2016-04-11 18:00
hbaker	107:44:11	110	2016-04-11 18:00
bmdaren	107:13:01	108	2016-04-11 17:30
froberts	130:25:08	120	2016-04-11 17:30
ghill	112:08:37	112	2016-04-11 20:00
imfransie	102:24:37	107	2016-04-11 22:30
kirwin	112:33:08	107	2016-04-11 18:00
lpetty	108:38:59	98	2016-04-11 17:00
mdonohue	104:20:46	107	2016-04-11 17:30
nbonnet	117:14:08	111	2016-04-11 15:45
paul.newman	113:16:07	110	2016-04-11 17:45
prodrieaux	115:52:39	113	2016-04-11 17:45
revans	112:03:33	112	2016-04-11 17:30
rvosler	127:14:56	118	2016-04-11 18:00
smoss	112:09:53	118	2016-04-11 16:30
ssavaae	119:02:45	119	2016-04-11 18:00
tlund	101:35:19	111	2016-04-11 18:00
tnuvolatd	106:38:47	109	2016-04-11 18:00
wilbur.shaw	112:03:44	110	2016-04-11 17:45
wvuckovich	107:57:47	107	2016-04-11 18:00

Current Checkouts Overview (updated real-time)

Overview Information

Following is the list of licenses currently being used. Licenses with zero usage omitted.

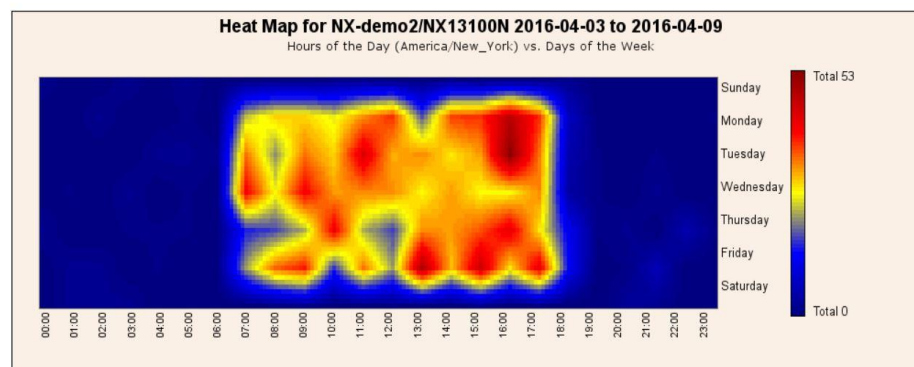
AutoRefresh Off - [Start](#)

ID	Feature	Tag	Number licenses	Licenses in use	Usage Percentage
<input type="checkbox"/>	MATLAB(MATLAB)	matlab_demo	10	10	100.00%
<input type="checkbox"/>	NX13100N(NX)	NX-demo2	15	15	100.00%
<input type="checkbox"/>	NX13100N_gateway(NX)	NX-demo2	15	15	100.00%
<input type="checkbox"/>	MATLAB(MATLAB)	matlab_demo2	15	8	53.33%
<input type="checkbox"/>	MATLAB(MATLAB)	matlab_demo3	20	10	50.00%
<input type="checkbox"/>	NX13100N(NX)	NX_demo	10	3	30.00%
<input type="checkbox"/>	NX13100N_gateway(NX)	NX_demo	10	3	30.00%
<input type="checkbox"/>	TestAccu(accurev)	accurev_demo2	6	1	16.67%
<input type="checkbox"/>	replica(accurev)	accurev_demo2	6	1	16.67%

[Edit color thresholds.](#)

Heatmap graph (24x7 pattern of usage)

7 Day Graph



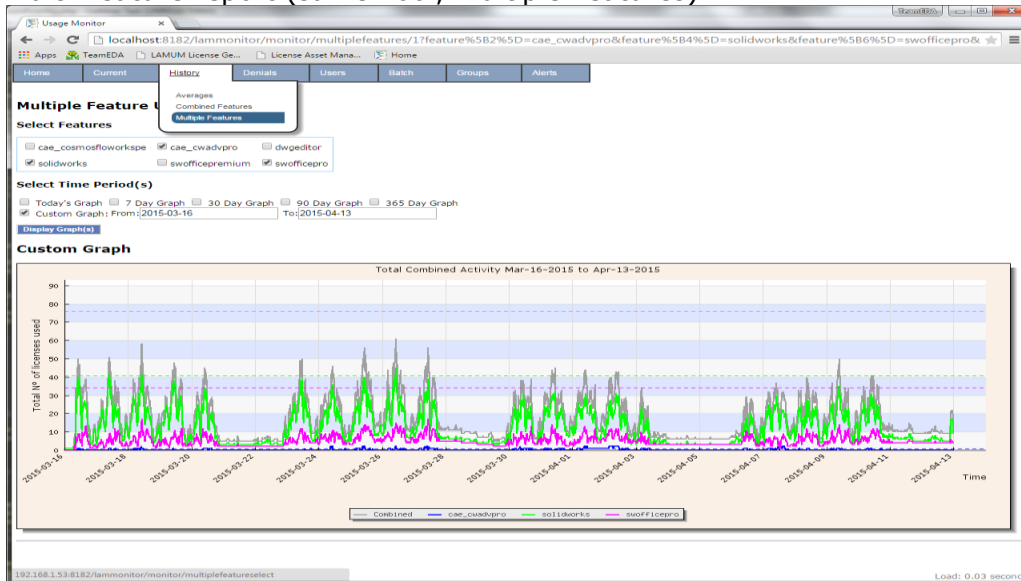
Average Usage Report (filter on any column)

First Prev 1 - 9 / 9 (9) Next Last 20

Reset Filter(s) Toggle Column Filters

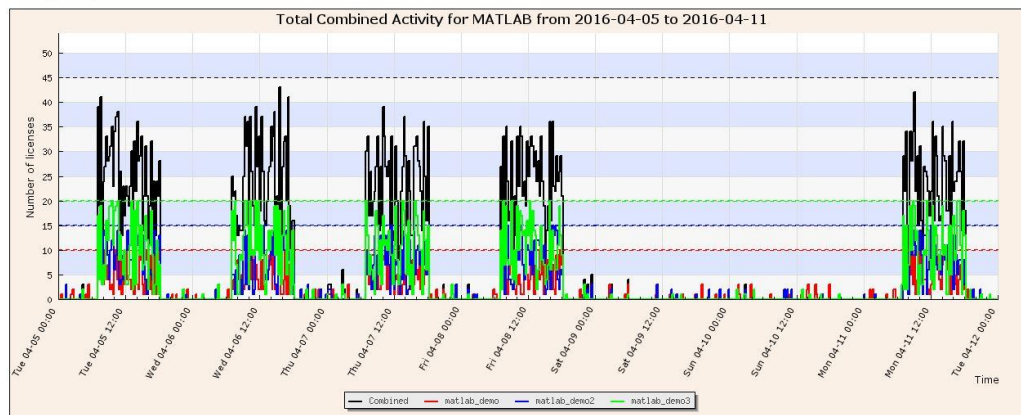
Average Usage Report Starting 2016-04-04 through 2016-04-11							
Feature	Tag name	Capacity	Total usage	Average Usage	Average number of users	Number of times at Max	Usage Percent
MATLAB	matlab_demo3	20	39:20:40	00:59:42	9.7	24	19.15
MATLAB	matlab_demo2	15	29:15:30	01:00:22	7.2	12	19.70
NX13100N_gateway	NX-demo2	15	28:46:00	01:00:47	6.9	15	19.26
NX13100N	NX-demo2	15	27:46:00	01:00:39	6.9	15	19.26
NX13100N	NX_demo	10	16:50:20	01:01:05	4.6	22	20.04
NX13100N_gateway	NX_demo	10	16:30:20	01:01:05	4.6	22	20.04
replica	accurev_demo2	6	11:30:12	01:01:59	3.2	40	20.17
TestAccu	accurev_demo2	6	10:06:12	01:02:46	3.2	40	20.17
MATLAB	matlab_demo	10	04:20:20	01:01:28	4.6	26	19.94

Multi-Feature report (same Tool, multiple Features)



Combined-Feature report (same Tool, multiple License servers)

7 Day Graph



For additional LAMUM reports visit our website at www.teameda.com

TeamEDA, Inc.
50 Bridge Street, Suite 304, Manchester, NH 03301
(603) 656-5200
info@teameda.com

"License Asset Manager" and "LAMUM" are trademark names of TeamEDA and products solely of TeamEDA.