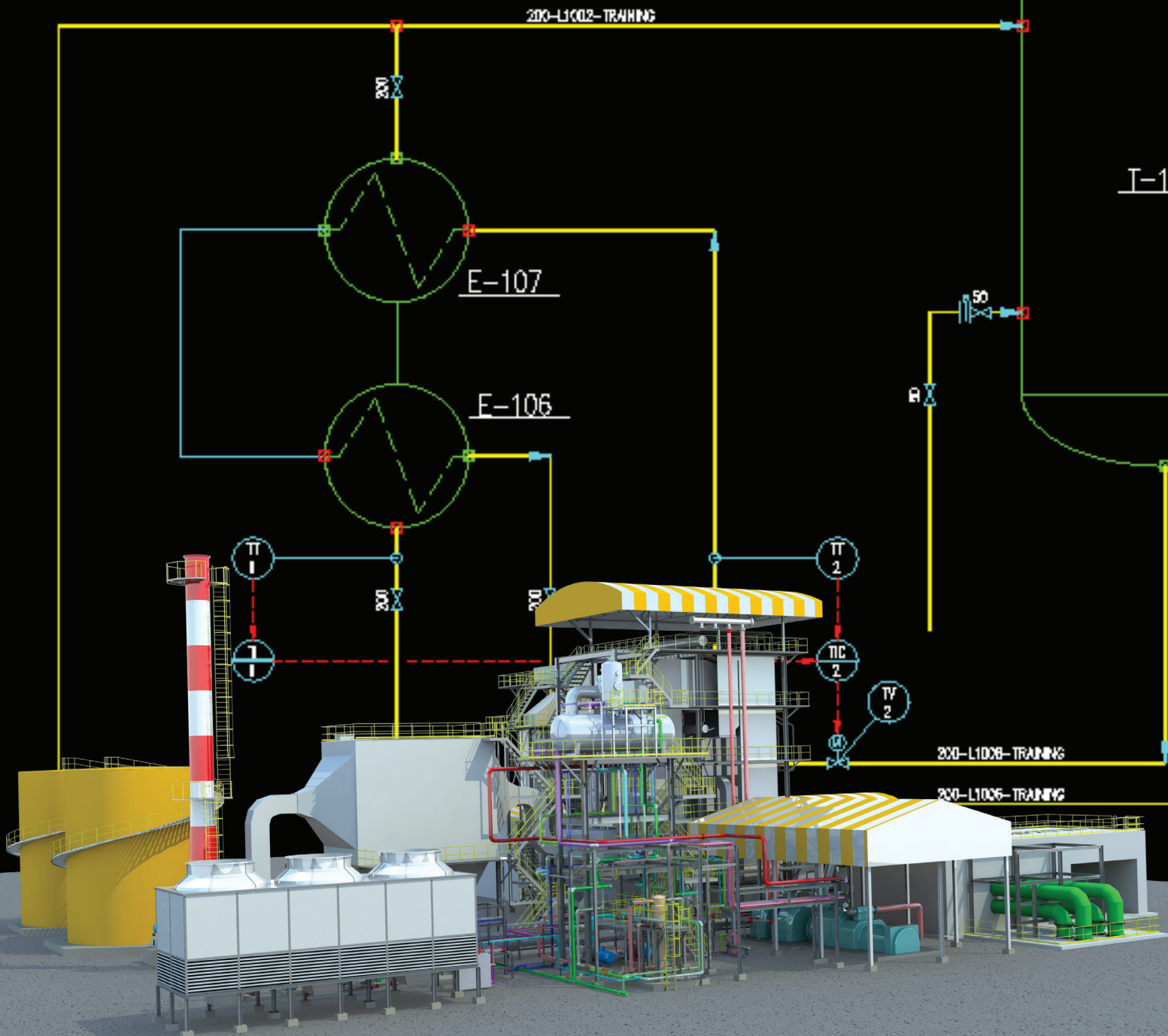




SolidPlant

SolidPlant P&ID

All new, all you need



SolidPlant P&ID

How SolidPlant P&ID works Smarter for you.



Start Easier. Run Better. Finish Smarter.

With simple reporting, editing, sharing, validation, and exchange of design information, SolidPlant P&ID application helps your projects start easier, run better, and finish smarter.

Familiar to designers and engineers.

Using the intuitive interface and standard 2D-based functionality, any 2D platform-trained professional can start using SolidPlant P&ID right away.

Easy to use and saves time.

Developed specifically for P&ID designers and engineers, SolidPlant P&ID includes a collection of tools to automate and simplify many of the detailed design and editing tasks performed every day.

Keeps project information accurate and accessible.

Whether you need to generate in-drawing reports or export information across an entire project, SolidPlant P&ID includes many features to support fast, accurate completion of each step, while ensuring data integrity in the face of constant design changes and modifications.

Create, modify, and manage piping and instrumentation diagrams with SolidPlant P&ID.

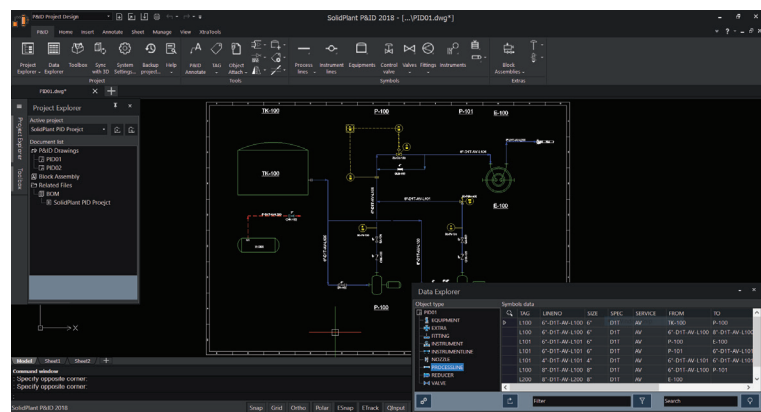
Built on the latest 2D platform, SolidPlant P&ID Interface is easy to use and familiar to designers and engineers, so your design team can start immediately with minimal training. Everyday tasks are streamlined and automated to boost productivity, while component and line information is easily accessed as you work. **SolidPlant P&ID** with **SolidPlant 3D** makes creating and designing your project easy and efficient, offering many benefits to EPC's and Owner Operators.

Project and Data Manager

Easily set up projects and preview drawings with straightforward organization and management of DWG files. Sort and organize underlying P&ID data for easy referencing and see specific information and data in the context of the drawing.

Symbol Libraries

Place snap-to, industry-standard symbols (PIP, ISA, JIS, and ISO/DIN), as well as symbols customized for specific company or client needs directly into drawings. Import custom made symbols used in one project to another. With the PID Get Library function, you can open the database file that contains all the previously saved customized symbols. From that file you can select any symbol and copy them to destination, being your project. The symbols are then available in the P&ID Equipment menu and ready to be used.

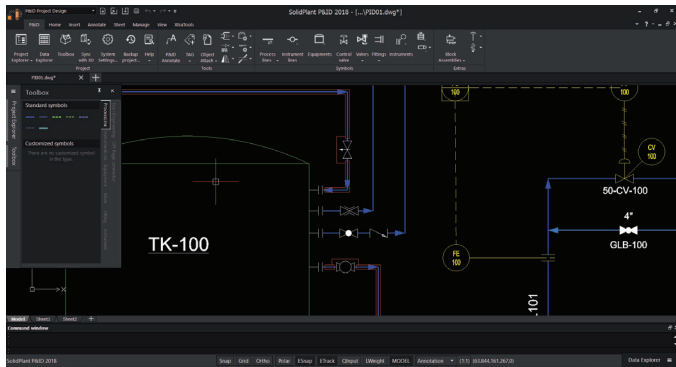


SolidPlant P&ID is built on the familiar 2D platform. The Data Manager makes P&ID information readily accessible for referencing and editing.

SolidPlant P&ID

Dynamic Lines and Components

Lines and components are dynamic with SolidPlant P&ID. Reduce manual breaking and mending of lines with intuitive grip editing and manipulation. Create, move, and snap lines into equipment. Lines automatically break, maintain flow direction, and attach to components that are inserted on, or attached to, the line. When a component is removed, lines mend automatically. Quickly move and snap components with dynamically linked properties and information in place without the burden of manually editing underlying data.



Tagging and Annotations

Easily create, edit, and customize tags and annotations in industry-standard formats. Simply click on the Equipment, lines or component you want to manage the tag for. In SolidPlant P&ID it's very easy to customize annotations and place them in your drawing. You can create any number of customized fields for equipment, fittings, lines, etc. Different text colors will help you to quickly identify the properties of the items in your drawing. Dynamic text fields will use the data from the drawing to be placed, reducing input mistakes.

Tag Register

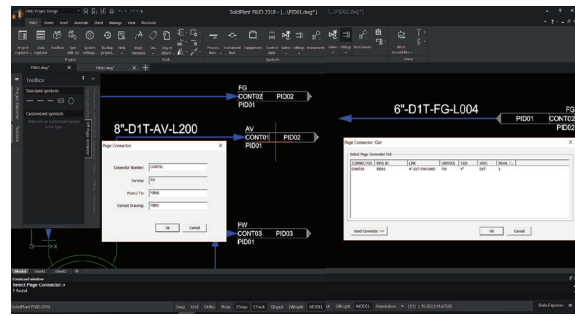
SolidPlant P&ID is a database driven engine which maintains a registry of unique tag numbers, whether in single-user mode or a network environment. The system automatically warns you when duplicate tag numbers are encountered and points out the problem.

Bloc Assembly

When a project has a great number of typical assemblies, SolidPlant P&ID's 'Bloc Assembly' function, makes it very easy to save an entire assembly into the database and replace it in any of your drawings at any time. Assemblies can be saved in the database as a block, ready to be placed in the drawing. This feature will save you lots of time.

Data Management and Reporting

Easily report, edit, exchange, and share project engineering information, and know the impact of external data updates for better management. Export data directly to SolidPlant or into drawing data tables as well as various file formats such as Microsoft® Excel® software. Quickly sort and organize information for easy referencing. Enhanced change management, viewing, and editing functionality help ensure that nothing slips through the cracks.

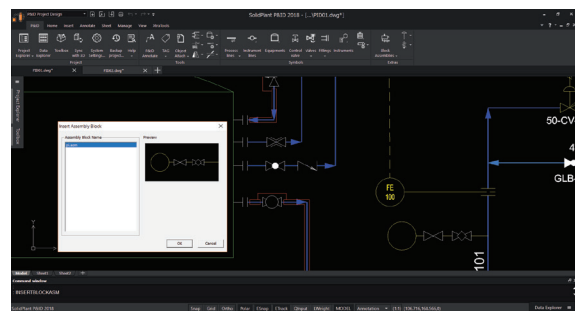


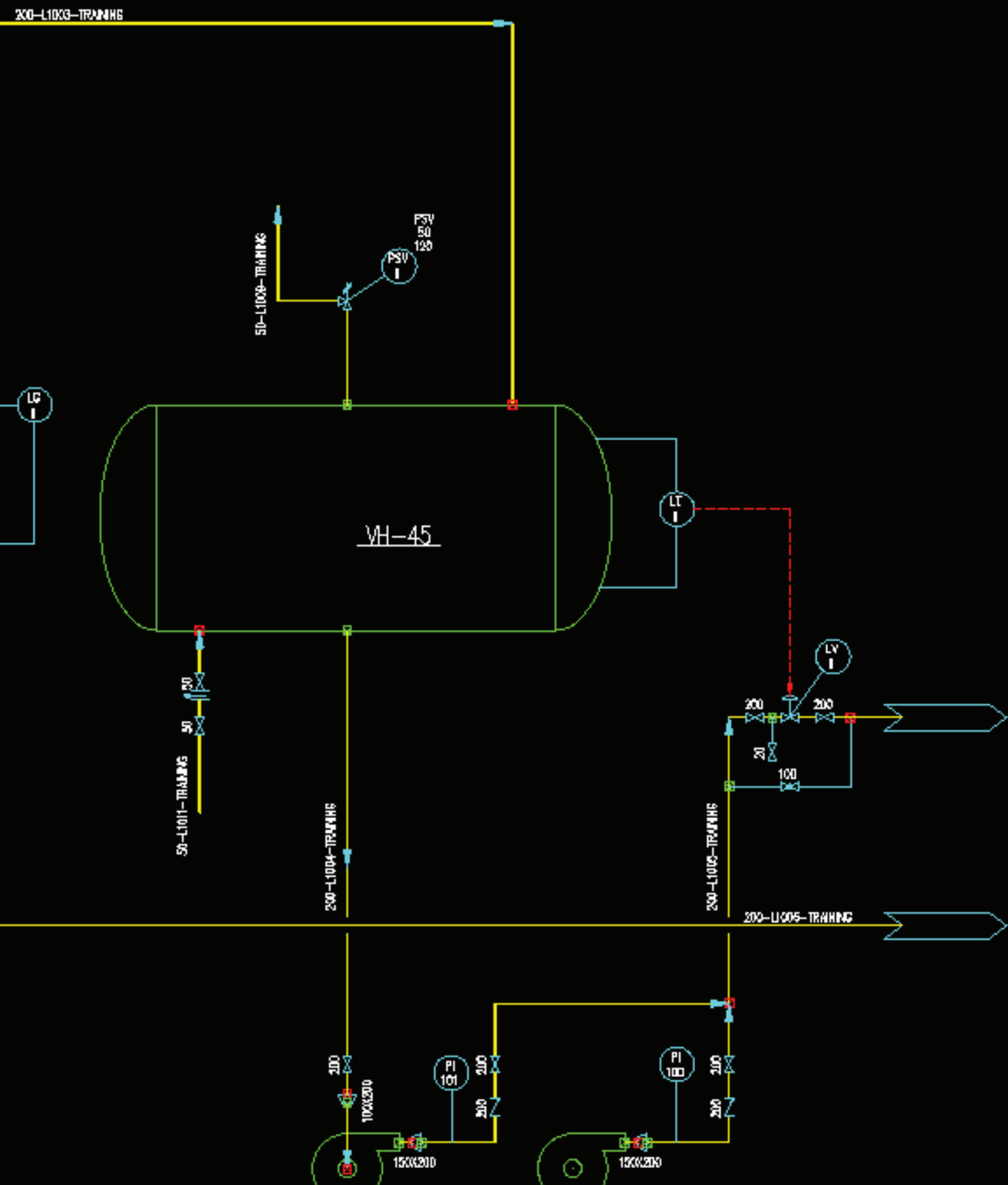
Multi-Sheet environment

SolidPlant PID offers an easy way to connect separate P&ID drawing sheets by using off-page connectors. Data will be transferred between the sheets without the risk of losing line information. Related sheets can be opened directly from the menu.

There is a high level of repeated information on a P&ID drawing and with the capabilities of the SolidPlant P&ID Data Manager, speed and accuracy is increased. We can simply cut and paste information from component to component.

Using SolidPlant P&ID software means that you can make the schematics and drawings faster than ever before. Everything you need is included in the software. Being able to create reports means you can make purchasing lists so your suppliers can produce prices for the equipment you need much more quickly. This enables you to deliver your quotations much earlier than you could have before.





SolidPlant B.V.

Singel 250 | 1016 AB Amsterdam Netherlands
 Tel. +31(0)20 8941 393 Fax. +31(0)20 8941 333
www.solidplant3d.com

System requirements :

OS : Microsoft Windows 7 (64 bit) or greater
 Processor : Intel® Core™ i5 process or Intel® Core™ i7 processor or Intel® Xeon® Processor E3 Family
 Memory : 16 GB minimum
 Disk Space : 50 GB minimum free hard disk space
 Video Card : 1 GB Microsoft OpenGL or Direct3D capable
 (*SolidWorks Certified cards and drivers recommended)
 Software : ARES Premium 2018

Copyright © 2011-2018 SolidPlant B.V. All rights reserved.